

HID-Basic BSN/BMH series multi-wattage for SON/CDO/CDM/MH/HPI

BSN 250/150 K407-TS 230/240V 50Hz

Impregnated electromagnetic copper/iron double-wattage ballasts for use with an external series (superimposed) ignitor for CDO, MH, HPI (Plus) and SON lamps

Product data

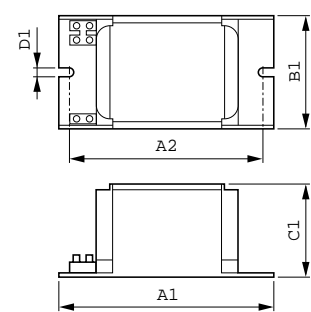
General Information	
Application Code	K407-TS
Lamp Type	SON/CDO
Number of Lamps	1 piece/unit
Operating and Electrical	
Input Voltage	230 V (default) or 240 V
Input Frequency	50 Hz
Power Factor 100% Load (Nom)	0.4
Mains Voltage Performance (AC)	-8%+6%
Mains Voltage Safety (AC)	-10%+10%
Input Current with PF Correction	0.85 A
Wiring	
Wire Striplength	7.0 mm
Ballast Contact Wire Cross Section	2.5 mm ²
Connector Type	Screw
System characteristics	
Capacitor	32µF/250V

Rated Ballast-Lamp Power	150/250 W
Recommended Ignitor	for SON/CDO lamps only series analog SU38 (913700671791) or digital SUD40 (913700193591)
Temperature	
T-Winding (Max)	140 °C
Delta-T Normal Conditions	80 °C
Approval and Application	
Active Temperature Protection	Yes
Approval Marks	CE marking ENEC certificate
Product Data	
Full product code	872790094092300
Order product name	BSN 250/150 K407-TS 230/240V 50Hz
EAN/UPC - Product	8727900940923
Order code	913700286226
Numerator - Quantity Per Pack	1
Numerator - Packs per outer box	6
Material Nr. (12NC)	913700286226

HID-Basic BSN/BMH series multi-wattage for SON/CDO/CDM/MH/HPI

Net Weight (Piece)	3.200 kg
--------------------	----------

Dimensional drawing



BSN 150/250 K407-TS 230/240V 50Hz

Product	D1	C1	A1	A2	B1
BSN 250/150 K407-TS 230/240V 50Hz	6.2 mm	65.0 mm	160.0 mm	139.0 mm	76.0 mm

